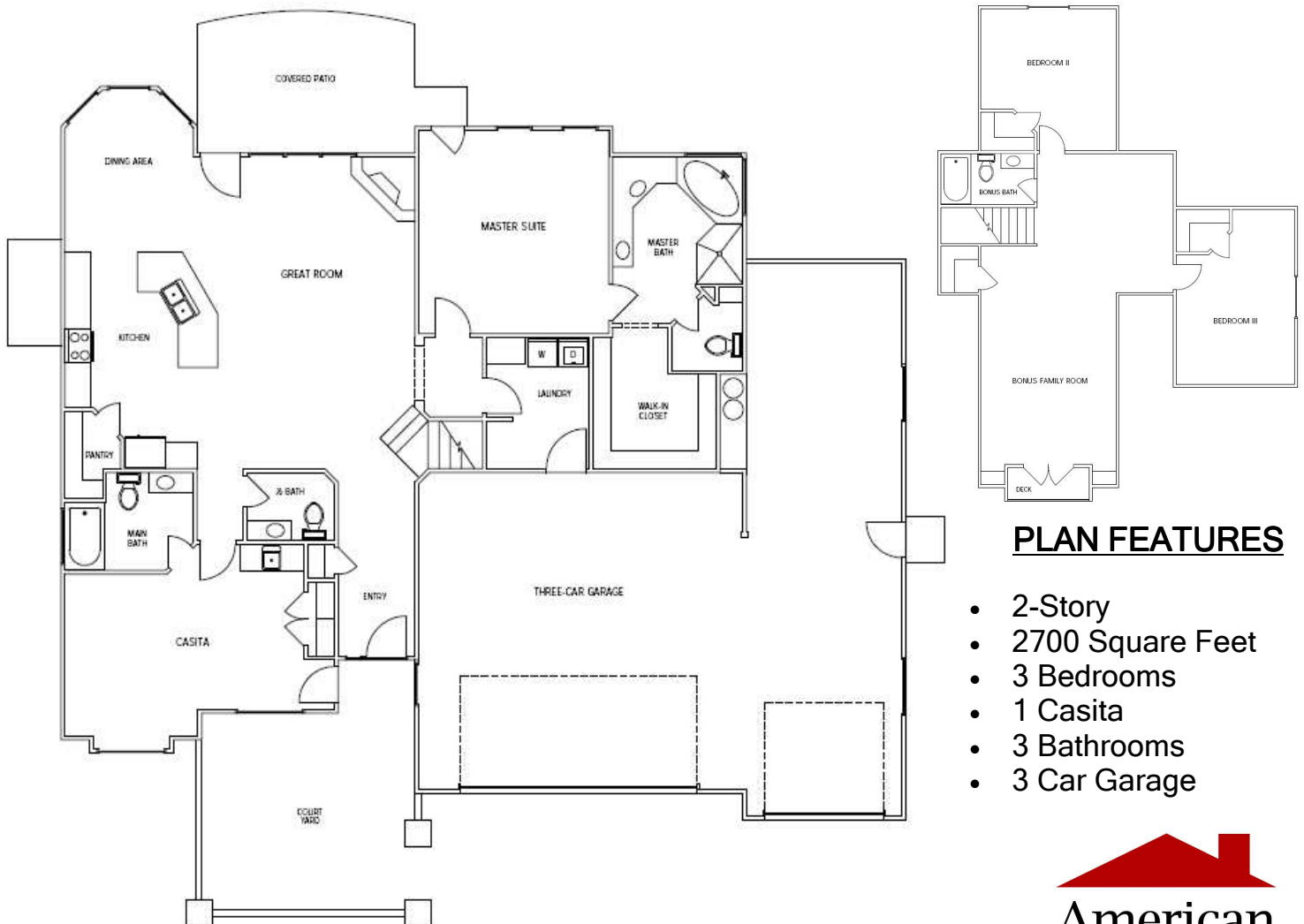




THE JEFFERSON

AT DIXIE SPRINGS

FLOORPLAN



PLAN FEATURES

- 2-Story
- 2700 Square Feet
- 3 Bedrooms
- 1 Casita
- 3 Bathrooms
- 3 Car Garage



*Floorplans and renderings are conceptual drawings and may vary from actual plans and homes as built. Options and features may not be available on all homes and are subject to change without notice. Actual homes may vary from photos and/or drawings which may not represent the lowest-priced homes in the community. Prices, specifications and availability are lot specific and subject to change without notice. See agent for details. 2010 American Heritage Homes. Renderings by Custom Home Design 2010.

THE *J*EFFERSON AT DIXIE SPRINGS

STANDARD FEATURES

KITCHEN

- GE® Builder's Choice Appliance Package
Clean/Stainless Steel
Dishwasher
Range/Oven (Gas or Electric)
Microwave
- Knotty Alder Cabinets
Staggered & Stepped
Crown Moulding
- Granite Countertops
- Tile Flooring—Entry, Kitchen, Dining, Master
Bathroom, Main Bathroom, Laundry &
Fireplace
- Recessed Canned Lighting
- Undermount Stainless-Steel Sink
- Garbage Disposal

BATHROOMS & LAUNDRY

- Granite Countertops
- Knotty Alder Cabinets
- Master Bathroom
Jetted Tub
Cultured Marble or Tile Surround
- Main Bathroom
Americast® Tub
Cultured Marble or Tile Surround
- Tile Flooring
- Moen® Faucets
Oil Rubbed Bronze or Brushed Nickel
- Craftmade® Lighting Bath Bar Fixture
Oil Rubbed Bronze or Brushed Nickel
- Pedestal Sink In 1/2 Bathroom

ENERGY-EFFICIENCY

- 13 Seer Air Conditioner
Dual Fuel System (Dixie REA Only)
- Programmable Set Back Thermostat
- 50-Gallon Quick Recovery Water Heater
- R-40 Attic Insulation
- R-15 Exterior Wall Insulation
- 80% Energy Efficient Furnace
- Vinyl Low E Windows
Almond or White

INTERIOR

- 9' High Ceiling Throughout Home
- Santé Fe Hand Textured Walls & Ceilings With
Rounded Corners
- 5 1/4" Entrada Style Baseboards
- 3 1/4" Entrada Door Casing
- 2 Tone Kwal® Custom Paint
Durable Paint On Trim
- Raised Two Panel Doors
- Fans
Family Room
Master Bedroom
- Pre-Wire For Fans In All Bedrooms/Study & Patio
- Phone Jacks With CAT5 Wiring
All Bedrooms/Study, Great Room & Kitchen
- Cable Jack With RG6 Wiring
All Bedrooms/Study, Great Room & Kitchen
- Better Home Products Hardware
Oil Rubbed Bronze or Brushed Nickel
- Craftmade® Lighting Fixtures
Oil Rubbed Bronze or Brushed Nickel
- Wall-To-Wall Carpet in Great Room, Hallways &
Bedrooms
- 7/16" Rebond Carpet Pad

EXTERIOR

- Full Stucco Including Eaves & Fascia
- Cultured Stone Accents
- Tile Roof
- Colored 4000 PSI Concrete Walks & Driveway
- Front Yard Landscape With Automatic Sprinkler
- Smooth Panel Garage Door
2 Keyless Remote Openers
1 Keyless Entry Garage Pad
Complete Garage With Paint & Trim
- 8' Entry Door
Stained
Insulated
- Covered Patio
- Two Hose Bibs
- Two Exterior GFCI Electrical Outlets
- Full Rain Gutters & Downspouts



**Specified features may not be available on all homes and some features may be optional upgrades. Prices, specifications, including without limitation the above-specified features, and availability are subject to specific plans and may change without notice. See agent for details. 2010 American Heritage Homes

